

Recorder
Lowland Ref

FOR REFERENCE PLEASE SEE
CONDOMINIUM PLAT BOOK NO. 92 PAGE 8-10

THIRTEENTH AMENDMENT
TO
DECLARATION OF CONDOMINIUM
GENDER PARK CONDOMINIUM



Instr: 200104160078564 04/16/2001
Pages: 14 Fee: \$126.80 12:34PM
Robert G. Montgomery T20010049820
Franklin County Recorder BXLOVELAND

This thirteenth amendment to the Declaration of GENDER PARK CONDOMINIUM is made on or as of the ___ day of April 2001.

Recitals

A. Gender Park Condominium is a condominium created pursuant to the provisions of Chapter 5311 of the Revised Code of Ohio ("the Condominium Act") by the filing of the Declaration of Gender Park Condominium and the Drawings thereof, recorded, respectively, as Instrument No. 199802240040764, and Condominium Plat Book 76, at page 81 et seq., both of the records of the Recorder of Franklin County, Ohio, and all amendments thereto.

B. Pursuant to the provisions of Article XVII of the Declaration, and the provisions of the Condominium Act, Declarant, The Qualstan Corporation, desires by this amendment to add a portion of the Additional Property to the Condominium, which Additional Property, hereinafter described, meets all of the criteria and qualifications for addition to the Condominium described in that Article.

Declaration

NOW THEREFORE, Declarant, the sole creator of the Condominium and the sole owner of the property hereinafter described to be added to the Condominium, hereby declares the Condominium Property of the Condominium to be expanded by addition of the property hereinafter described, as follows:

1. Definitions. All terms used herein shall have the same meanings as those terms have as used and defined in the Declaration.
2. Additional Property Added. A legal description of the portion of the property added hereby to the Condominium Property, consisting of 1.290 acres, more or less, is described in the attachment hereto, marked "Exhibit A", and hereby made a part hereof. A sketch site plan showing the composition of the property added hereby is attached hereto, marked "Exhibit B", and hereby made a part hereof. A plot plan showing the relationship of the property added hereby to the property already a part of the Condominium is attached hereto, marked "Exhibit C", and hereby made a part hereof.
3. Name. The Condominium, as expanded hereby, shall continue to be named "Gender Park Condominium".
4. Purposes. The purposes of the Condominium shall continue to be as set forth in the Declaration (encompassing the additional property added hereby).
5. Improvement Description. The Additional Property added to the Condominium Property hereby contains one building containing seven dwelling units and two buildings containing five dwelling units each, adding a total of seventeen (17) dwelling units, and expanding the Condominium to contain a total of two hundred eighty-six (286) dwelling units, each of which is called a "Unit". One building is two-story townhouse style and the other two buildings are a combination of two story townhouse style and single story ranch style. Each building is constructed on a poured concrete foundation, built of wood

(continued next page)

CERTIFICATE OF AUDITOR

A copy of this Thirteenth Amendment to the Declaration for Gender Park Condominium, together with the Thirteenth Amendment to the Drawings attached thereto, were filed with this office on April 16, 2001.

Joe Testa
Franklin County Auditor

By Joe Testa
Deputy Auditor

TRANSFERRED

APR 16 2001

JOSEPH W. TESTA
AUDITOR
FRANKLIN COUNTY, OHIO

frame, with vinyl siding, and an asphalt shingle roof. The principal materials of which the buildings are constructed are wood, glass, concrete, concrete block, vinyl siding, asphalt shingles, and drywall. Each dwelling unit has a patio or yard area and either a front stoop or porch or part of a shared front stoop or porch. The Units added hereby have either no garage, a one car attached garage, or a two car attached garage. The Units do not have basements. In addition, there are green and landscaped areas and private asphalt drives and parking areas. All improvements on the property added hereby are compatible in terms of quality of construction, principal materials used, and architectural style and design to the improvements now a part of the Condominium Property.

6. Units.

a. Unit Designation. Each of the Units added to the Condominium hereby is designated on the amendment to the Drawings filed simultaneously herewith, and attached hereto (although the same may be detached herefrom upon filing by the Franklin County Recorder and filed in separate records), labeled "The Drawings Gender Park Condominium Thirteenth Amendment", by a Unit designation, which is a number corresponding with the building number and a capitalized letter of the alphabet. A listing of the type and composition of all Units that may be in the Condominium is set forth on the exhibit attached hereto, marked "Exhibit D", and hereby made a part hereof. The Unit designation of each Unit added hereby and of each Unit heretofore part of the Condominium is set forth on "Exhibit E" attached hereto and hereby made a part hereof.

b. Composition of Units. Each Unit added hereby consists of the space in the building designated on the amendment to the Drawings filed simultaneously herewith with that Unit's Unit designation, including and excluding, as appropriate, those same items as are described and defined in the description of Unit types on Exhibit D and in the Declaration. The type of each Unit is shown on the attached Exhibit E. Floor plan layouts and elevation drawings for the Units and building added hereby are shown on the amendment to the Drawings filed simultaneously herewith.

c. Unit Locations. The location of each Unit added hereby is shown on the amendment to the Drawings filed simultaneously herewith, and is also shown on Exhibit B. Each Unit has direct access to Common Areas leading directly to Gender Road, a public street.

7. Common and Limited Common Areas.

a. Common Areas. All of the additional property hereby added hereto, including all of the land and all improvements thereon and appurtenances thereto, except those portions labeled or described herein or in the amendment to the Drawings filed herewith as a part of a Unit, are Common Areas.

b. Limited Common Areas. Those portions of the Common Areas that are added hereby that are labeled or designated "limited common areas" on the amendment to the Drawings filed herewith are Limited Common Areas. These Limited Common Areas consist of a front stoop or porch or part of a shared front stoop or porch, and a patio or yard area contiguous to and appurtenant to each Unit. In each case, a Limited Common Area is reserved for the exclusive use of the Unit or Units which those improvements are designed or designated to serve.

c. Undivided Interests. The undivided interest in the Common Areas of each Unit in the Condominium, as expanded hereby, and as thereby allocated and reallocated, are as designated on the attached Exhibit E, and, in each case, is based on each Unit having an equal par value of one (1.00) and resulting in each Unit having an equal undivided interest. All Units added also have equal par values of one (1.00), and thus, also have an equal undivided interest. This exhibit supersedes, in its entirety, Exhibit C of the Declaration, and all amendments thereto. The Common Areas shall be owned by the Unit owners as tenants in common, and ownership thereof shall remain undivided. No Unit owner may waive or release any rights in the Common Areas. Further, the undivided interest of a Unit in the Common Areas shall not be separated from the Unit to which it appertains.

8. Effects of Expansion. Upon the filing for record of this amendment to the Declaration adding additional property to the Condominium Property:

a. the added portion shall thereafter be subject to and benefited by all of the terms and provisions of the Declaration, to the same extent and with the same effect as if that added portion had been provided herein as constituting part of the Condominium Property, that is, the rights, easements, covenants, restrictions and assessment plan set forth therein shall run with, bind and benefit the added portion in the same manner, to the same extent, and with the same force and effect as the terms of the Declaration apply to the Condominium Property;

b. the owner or owners of the added portion shall thereupon become members, to the same extent, with the same effect, subject to the same obligations, and imbued with the same rights, as all other members; and

c. in all other respects, all of the provisions of the Declaration shall include and apply to such additional portion, and to the owners, mortgagees and lessees thereof, with equal meaning and of like force and effect.

IN WITNESS WHEREOF, the undersigned has executed this instrument this 10th day of April 2001.

Signed and acknowledged
in the presence of:

THE QUALSTAN CORPORATION

Kathleen M. Michael
(Print Name) Kathleen M. Michael

By Julie D. Beshara
Julie D. Beshara, Assistant Secretary

Calvin T. Johnson, Jr.
(Print Name) Calvin T. Johnson, Jr.

STATE OF OHIO
COUNTY OF FRANKLIN, SS:

This instrument was acknowledged before me by Julie D. Beshara, Assistant Secretary of The Qualstan Corporation, an Ohio corporation, on its behalf, this 10th day of April 2001.

Calvin T. Johnson, Jr.
Notary Public



CALVIN T. JOHNSON, JR., ATTORNEY-AT-LAW
NOTARY PUBLIC, STATE OF OHIO
LIFETIME COMMISSION

This instrument prepared by Calvin T. Johnson, Jr., attorney at law, Loveland & Brosius, 50 West Broad Street, Columbus, Ohio 43215-5917.

EXHIBIT A

THIRTEENTH AMENDMENT
DECLARATION OF CONDOMINIUM
GENDER PARK CONDOMINIUM

Legal Description, Property Added
(1.290 acres)

Situated in the State of Ohio, County of Franklin, City of Columbus, being located in Section 13, Township 11, Range 21, Congress Lands, and being part of the 50.770 acre tract of land conveyed to Qualstan Corporation, by deed of record in Instrument Number 199706160023398, (all references refer to the records of the Recorder's Office, Franklin County, Ohio) being more particularly bounded and described as follows:

Beginning at an iron pin set in the northerly right-of-way line of Winchester Crossing, the northerly line of that subdivision entitled "Meadows at Winchester Section 1" as recorded in Plat Book 86, Pages 88 and 89, the southeasterly corner of "Gender Park Condominium Eleventh Amendment";

thence North 03° 54' 44" East, with the easterly line of said "Gender Park Condominium Eleventh Amendment" and the easterly line of "Gender Park Condominium Twelfth Amendment", a distance of 237.12 feet to a northeasterly corner thereof, the southeasterly corner of "Gender Park Condominium Sixth Amendment", the southwesterly corner of "Gender Park Condominium Fifth Amendment";

thence South 86° 05' 16" East, with the southerly line of said "Gender Park Condominium Fifth Amendment", a distance of 168.00 feet to a point;

thence across said Qualstan Corporation tract, the following courses and distances:

South 03° 54' 44" West, a distance of 115.12 feet to a point;

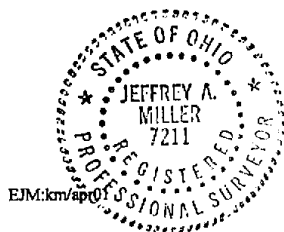
South 86° 05' 16" East, a distance of 134.00 feet to a point; and

South 03° 54' 44" West, a distance of 122.00 feet to an iron pin set in said northerly right-of-way line, said northerly line of "Meadow at Winchester Section 1";

thence North 86° 05' 16" West, with said northerly right-of-way line, said northerly line, a distance of 302.00 feet to the Point of Beginning and containing 1.290 acres of land, more or less.

Bearings are based on the Ohio State Plane Coordinate System as per NAD83. Control for bearings was from coordinates of monuments numbers 9968 and 9932 established by the Franklin County Engineering Department using Global Positioning System procedures and equipment in which the bearing is South 04° 14' 33" West.

EVANS, MECHWART, HAMBLETON, & TILTON, INC.



Jeffrey A. Miller 46-01
Jeffrey A. Miller
Registered Surveyor No. 7211

EXHIBIT "B"
DECLARATION OF CONDOMINIUM
GENDER PARK CONDOMINIUM
THIRTEENTH AMENDMENT
PLOT PLAN, PROPERTY ADDED

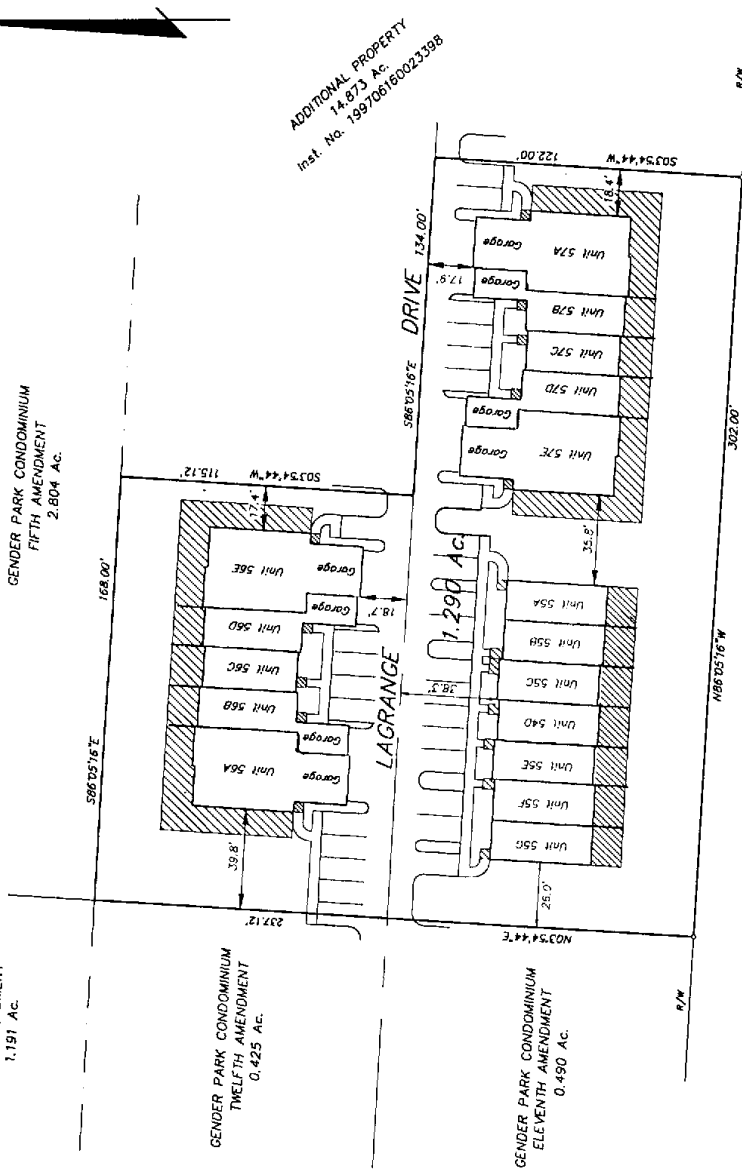
GENDER PARK CONDOMINIUM
 SIXTH AMENDMENT
 1.191 AC.

GENDER PARK CONDOMINIUM
 FIFTH AMENDMENT
 2.804 AC.

GENDER PARK CONDOMINIUM
 TWELFTH AMENDMENT
 0.425 AC.

ADDITIONAL PROPERTY
 14.873 AC.
 Inst. No. 199706160023398

GENDER PARK CONDOMINIUM
 ELEVENTH AMENDMENT
 0.490 AC.



LEGEND

Areas not designated as units or limited common areas are common areas.



= Limited Common Area

NOTE:

Bearings are based on The Ohio State Plane Coordinate System as per NAD83. Control for bearings was from coordinates of Franklin County Geodetic Survey Monument Numbers 9968 and 9932 established by the Franklin County Engineering Department, Using Global Positioning System procedures and equipment in which the bearing is South 4° 14' 33" West.

WINCHESTER CROSSING BLVD. (95')



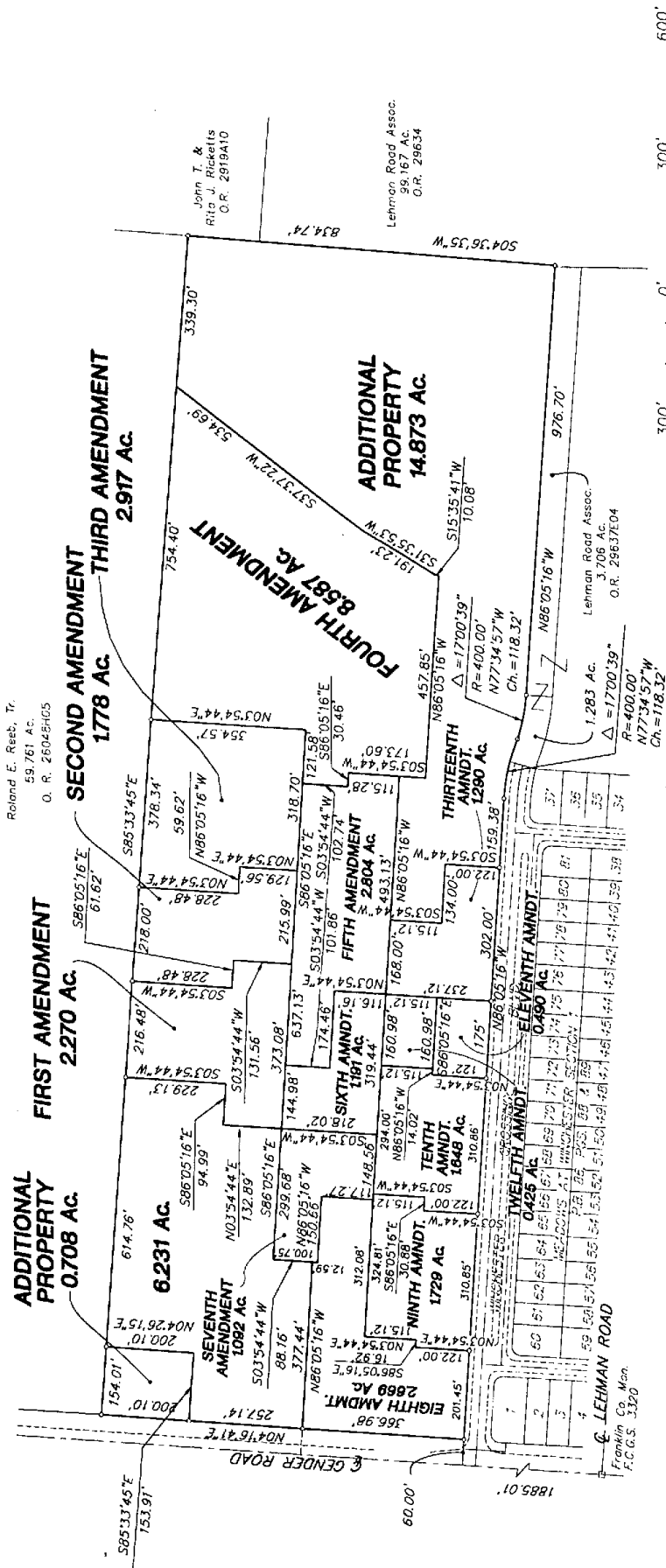
APRIL 2, 2001
 O = Iron Pin

EXHIBIT 'C'

GENDER PARK CONDOMINIUM THIRTEENTH AMENDMENT DECLARATION OF CONDOMINIUM PLOT PLAN, ENTIRE TRACT

NOTE:
Bearings are based on The Ohio State Plane Coordinate System as per NAD83. Control for bearings was from coordinates of monuments Numbers 9968 and 9932 established by the Franklin County Engineering Department, using Global Positioning System procedures and equipment in which the bearing is South 41°4'33" West.

SURVEYED & PLATTED
BY
EVANS, MECHWART, HAMBLETON & TILTON, INC.
CONSULTING ENGINEERS & SURVEYORS
170 MILL STREET
GAHANNA, OHIO 43230
(614) 471-5150



APRIL 2, 2001

EXHIBIT D

THIRTEENTH AMENDMENT
DECLARATION OF CONDOMINIUM
GENDER PARK CONDOMINIUM

Unit Types

<u>Type</u>	<u>Description</u>
T1B -	A two bedroom standard townhouse Unit containing a full bath and two bedrooms on the second floor, a living room with dining area, a kitchen, and, in some instances, a half bath and/or laundry room on the first floor and does not have a garage. Contains approximately 798 or 1,148 gross interior square feet, ⁽¹⁾⁽²⁾ and five, six or seven rooms, in total ⁽³⁾ depending upon the specific Unit.
T1BG -	A two bedroom townhouse Unit containing a full bath and two bedrooms on the second floor, a living room with dining area, a kitchen, and, in some instances, a half bath and/or laundry room on the first floor. Contains approximately 1,178 gross interior square feet ⁽¹⁾⁽²⁾ and five, six or seven rooms, in total ⁽³⁾ depending upon the specific Unit.
T2BG -	A two bedroom deluxe townhouse Unit, containing two full baths and two bedrooms on the second floor, a living room with dining area, a kitchen, a laundry room, and, in some instances, a half bath on the first floor. Contains approximately 1,178 gross interior square feet ⁽¹⁾⁽²⁾ and seven or eight rooms, in total ⁽³⁾ depending upon the specific Unit.
T3 -	A three bedroom townhouse Unit, containing three bedrooms and a bath on the second floor, a living room with dining area, a kitchen, a laundry room, and half bath on the first floor and does not have a garage. Contains approximately 1,178 gross interior square feet ⁽¹⁾⁽²⁾ and eight rooms, in total. ⁽³⁾
T3BG -	A three bedroom townhouse Unit, containing three bedrooms and a bath on the second floor, a living room with dining area, a kitchen, a laundry room, and half bath on the first floor. Contains approximately 1,178 gross interior square feet ⁽¹⁾⁽²⁾ and eight rooms, in total. ⁽³⁾
R2BG -	A two bedroom ranch style unit, containing two full baths, two bedrooms, a living room with dining area, a kitchen and a laundry room on the first floor. Contains approximately 1,209 gross interior square feet, ⁽¹⁾⁽²⁾ and seven rooms, in total. ⁽³⁾
R3 -	A three bedroom ranch style Unit, containing two full baths, three bedrooms, a living room with dining area, a kitchen and a laundry room on the first floor. Contains approximately 1,209 gross interior square feet ⁽¹⁾⁽²⁾ and eight rooms, in total. ⁽³⁾

Some Units may have one or more of the following: an air conditioning system, a refrigerator, gas range, and a dishwasher. Some Units have a fireplace. In addition, each Unit has the exclusive use of a patio or yard area and a porch or stoop.

NOTES:

- (1) "Approximate interior gross square feet" means the gross square feet of the Unit at all levels, and is measured from the inside of the Unit's exterior perimeter walls, inward, including space encompassed by interior walls. Each Unit with a garage contains an additional approximately 241 gross interior square feet for a one car front garage or a one car end garage or an additional approximately 412 gross interior square feet for a two car garage.
- (2) In the event that a basement is added to a Unit type, the basement will be included as part of a Unit and the approximate gross interior square footage will increase so as to include the additional space.
- (3) "Rooms, in total," includes each bath or half bath as one room each, and the living room with dining area as one room, and does not count closets, hallways, garages or foyers as rooms.

EXHIBIT E

**THIRTEENTH AMENDMENT
DECLARATION OF CONDOMINIUM
GENDER PARK CONDOMINIUM**

Unit Information

I. EXISTING UNITS:

<u>Unit Designation</u>	<u>Unit Type</u>	<u>Bedrooms</u>	<u>Garage Spaces</u>	<u>Undivided Interest</u>
2A	R2BG	2	2	1/286th
2B	T2BG	2	1	1/286th
2C	T1B	2	0	1/286th
2D	T1BG	2	1	1/286th
2E	R2BG	2	2	1/286th
3A	R2BG	2	2	1/286th
3B	T2BG	2	1	1/286th
3C	T1B	2	0	1/286th
3D	T1BG	2	1	1/286th
3E	R2BG	2	2	1/286th
4A	R2BG	2	2	1/286th
4B	T2BG	2	1	1/286th
4C	T1B	2	0	1/286th
4D	T1BG	2	1	1/286th
4E	R2BG	2	2	1/286th
5A	R2BG	2	2	1/286th
5B	T2BG	2	1	1/286th
5C	T1B	2	0	1/286th
5D	T1BG	2	1	1/286th
5E	R2BG	2	2	1/286th
6A	R2BG	2	2	1/286th
6B	T2BG	2	1	1/286th
6C	T1B	2	0	1/286th
6D	T1BG	2	1	1/286th
6E	R2BG	2	2	1/286th
7A	R2BG	2	2	1/286th
7B	T2BG	2	1	1/286th
7C	T1B	2	0	1/286th
7D	T1BG	2	1	1/286th
7E	R2BG	2	2	1/286th
8A	R2BG	2	2	1/286th
8B	T2BG	2	1	1/286th
8C	T1B	2	0	1/286th
8D	T1BG	2	1	1/286th
8E	R2BG	2	2	1/286th
9A	R2BG	2	2	1/286th
9B	T2BG	2	1	1/286th
9C	T1B	2	0	1/286th
9D	T1BG	2	1	1/286th
9E	R2BG	2	2	1/286th
10A	R2BG	2	2	1/286th
10B	T2BG	2	1	1/286th
10C	T1B	2	0	1/286th
10D	T1BG	2	1	1/286th
10E	R2BG	2	2	1/286th

EXHIBIT E
THIRTEENTH AMENDMENT
DECLARATION OF CONDOMINIUM
GENDER PARK CONDOMINIUM

Unit Information

I. EXISTING UNITS (Continued):

<u>Unit Designation</u>	<u>Unit Type</u>	<u>Bedrooms</u>	<u>Garage Spaces</u>	<u>Undivided Interest</u>
11A	R2BG	2	2	1/286th
11B	T2BG	2	1	1/286th
11C	T1B	2	0	1/286th
11D	T1BG	2	1	1/286th
11E	R2BG	2	2	1/286th
12A	R3	3	2	1/286th
12B	T2BG	2	1	1/286th
12C	T1B	2	0	1/286th
12D	T1BG	2	1	1/286th
12E	R3	3	2	1/286th
13A	R2BG	2	2	1/286th
13B	T1BG	2	1	1/286th
13C	T1B	2	0	1/286th
13D	T1BG	2	1	1/286th
13E	R3	3	2	1/286th
14A	R3	3	2	1/286th
14B	T1BG	2	1	1/286th
14C	T1B	2	0	1/286th
14D	T2BG	2	1	1/286th
14E	R2BG	2	2	1/286th
15A	R3	3	2	1/286th
15B	T1BG	2	1	1/286th
15C	T1B	2	0	1/286th
15D	T1BG	2	1	1/286th
15E	R3	3	2	1/286th
16A	R3	3	2	1/286th
16B	T1BG ⁽¹⁾	2	1	1/286th
16C	T1B	2	0	1/286th
16D	T1BG	2	1	1/286th
16E	R3	3	2	1/286th
17A	R3	3	2	1/286th
17B	T1BG	2	1	1/286th
17C	T1B	2	0	1/286th
17D	T1BG	2	1	1/286th
17E	R2BG	2	2	1/286th
18A	R2BG	2	2	1/286th
18B	T1BG	2	1	1/286th
18C	T1B ⁽¹⁾	2	0	1/286th
18D	T1BG	2	1	1/286th
18E	R2BG	2	2	1/286th
19A	R3 ⁽²⁾	3	2	1/286th
19B	T2BG	2	1	1/286th
19C	T1B	2	0	1/286th
19D	T1BG	2	1	1/286th
19E	R2BG	2	2	1/286th

EXHIBIT E
THIRTEENTH AMENDMENT
DECLARATION OF CONDOMINIUM
GENDER PARK CONDOMINIUM

Unit Information

I. EXISTING UNITS (Continued):

<u>Unit Designation</u>	<u>Unit Type</u>	<u>Bedrooms</u>	<u>Garage Spaces</u>	<u>Undivided Interest</u>
20A	R3	3	2	1/286th
20B	T1BG	2	1	1/286th
20C	T1B	2	0	1/286th
20D	T1BG	2	1	1/286th
20E	R2BG	2	2	1/286th
21A	R2BG	2	2	1/286th
21B	T1BG	2	1	1/286th
21C	T1B	2	0	1/286th
21D	T2BG	2	1	1/286th
21E	R2BG	2	2	1/286th
22A	R2BG	2	2	1/286th
22B	T1BG	2	1	1/286th
22C	T1B	2	0	1/286th
22D	T1BG	2	1	1/286th
22E	R2BG	2	2	1/286th
23A	R3	3	2	1/286th
23B	T1BG	2	1	1/286th
23C	T1B	2	0	1/286th
23D	T1BG	2	1	1/286th
23E	R2BG	2	2	1/286th
24A	R3	2	2	1/286th
24B	T1BG	2	1	1/286th
24C	T1B	2	0	1/286th
24D	T1BG	2	1	1/286th
24E	R2BG	2	2	1/286th
25A	R2BG	2	2	1/286th
25B	T1BG	2	1	1/286th
25C	T1B	2	0	1/286th
25D	T1BG	2	1	1/286th
25E	R2BG	2	2	1/286th
26A	R2BG	2	2	1/286th
26B	T1BG	2	1	1/286th
26C	T1B	2	0	1/286th
26D	T1BG	2	1	1/286th
26E	R2BG	2	2	1/286th
27A	R3	3	2	1/286th
27B	T1BG	2	1	1/286th
27C	T1B	2	0	1/286th
27D	T1BG	2	1	1/286th
27E	R2BG	2	2	1/286th
28A	R2BG	2	2	1/286th
28B	T1BG	2	1	1/286th
28C	T1B	2	0	1/286th
28D	T1BG	2	1	1/286th
28E	R3	3	2	1/286th

EXHIBIT E
THIRTEENTH AMENDMENT
DECLARATION OF CONDOMINIUM
GENDER PARK CONDOMINIUM

Unit Information

I. EXISTING UNITS (Continued):

<u>Unit Designation</u>	<u>Unit Type</u>	<u>Bedrooms</u>	<u>Garage Spaces</u>	<u>Undivided Interest</u>
29A	R3	3	2	1/286th
29B	T1BG	2	1	1/286th
29C	T1B	2	0	1/286th
29D	T2BG	2	1	1/286th
29E	R2BG	2	2	1/286th
30A	R2BG	2	2	1/286th
30B	T1BG	2	1	1/286th
30C	T1B	2	0	1/286th
30D	T1BG	2	1	1/286th
30E	R3	3	2	1/286th
31A	R2BG	2	2	1/286th
31B	T2BG	2	1	1/286th
31C	T1B	2	0	1/286th
31D	T1BG	2	1	1/286th
31E	R2BG	2	2	1/286th
32A	R3	3	2	1/286th
32B	T1BG	2	1	1/286th
32C	T1B	2	0	1/286th
32D	T1BG	2	1	1/286th
32E	R2BG	2	2	1/286th
33A	R3	3	2	1/286th
33B	T1BG	2	1	1/286th
33C	T1B	2	0	1/286th
33D	T1BG	2	1	1/286th
33E	R2BG	2	2	1/286th
34A	R3	3	2	1/286th
34B	T1BG	2	1	1/286th
34C	T1B	2	0	1/286th
34D	T1BG	2	1	1/286th
34E	R3	3	2	1/286th
35A	R2BG	2	2	1/286th
35B	T2BG	2	1	1/286th
35C	T1B	2	0	1/286th
35D	T1BG	2	1	1/286th
35E	R2BG	2	2	1/286th
36A	R3	3	2	1/286th
36B	T1BG	2	1	1/286th
36C	T1B	2	0	1/286th
36D	T1BG	2	1	1/286th
36E	R2BG	2	2	1/286th
37A	R2BG	2	2	1/286th
37B	T2BG	2	1	1/286th
37C	T1B	2	0	1/286th
37D	T1BG	2	1	1/286th
37E	R2BG	2	2	1/286th

EXHIBIT E
THIRTEENTH AMENDMENT
DECLARATION OF CONDOMINIUM
GENDER PARK CONDOMINIUM

Unit Information

I. EXISTING UNITS (Continued):

<u>Unit Designation</u>	<u>Unit Type</u>	<u>Bedrooms</u>	<u>Garage Spaces</u>	<u>Undivided Interest</u>
38A	R2BG	2	2	1/286th
38B	T1BG	2	1	1/286th
38C	T1B	2	0	1/286th
38D	T1BG	2	1	1/286th
38E	R3	3	2	1/286th
39A	R3	3	2	1/286th
39B	T2BG	2	1	1/286th
39C	T1B	2	0	1/286th
39D	T1BG	2	1	1/286th
39E	R2BG	2	2	1/286th
40A	R3	3	2	1/286th
40B	T1BG	2	1	1/286th
40C	T1B	2	0	1/286th
40D	T1BG	2	1	1/286th
40E	R2BG	2	2	1/286th
41A	R2BG	2	2	1/286th
41B	T1BG	2	1	1/286th
41C	T1B	2	0	1/286th
41D	T2BG	2	1	1/286th
41E	R3	3	2	1/286th
42A	R2BG	2	2	1/286th
42B	T2BG	2	1	1/286th
42C	T1B	2	0	1/286th
42D	T2BG	2	1	1/286th
42E	R3	3	2	1/286th
43A	R2BG	2	2	1/286th
43B	T1BG	2	1	1/286th
43C	T1B	2	0	1/286th
43D	T1BG	2	1	1/286th
43E	R2BG	2	2	1/286th
44A	R2BG	2	2	1/286th
44B	T1BG	2	1	1/286th
44C	T1B	2	0	1/286th
44D	T1BG	2	1	1/286th
44E	R2BG	2	2	1/286th
45A	R2BG	2	2	1/286th
45B	T1BG	2	1	1/286th
45C	T1B	2	0	1/286th
45D	T1BG	2	1	1/286th
45E	R2BG	2	2	1/286th
46A	R2BG	2	2	1/286th
46B	T1BG	2	1	1/286th
46C	T1B	2	0	1/286th
46D	T1BG	2	1	1/286th
46E	R2BG	2	2	1/286th

EXHIBIT E

THIRTEENTH AMENDMENT
DECLARATION OF CONDOMINIUM
GENDER PARK CONDOMINIUM

I. EXISTING UNITS (Continued):

<u>Unit Designation</u>	<u>Unit Type</u>	<u>Bedrooms</u>	<u>Garage Spaces</u>	<u>Undivided Interest</u>
47A	R2BG	2	2	1/286th
47B	T1BG	2	1	1/286th
47C	T1B	2	0	1/286th
47D	T1BG	2	1	1/286th
47E	R2BG	2	2	1/286th
48A	R2BG	2	2	1/286th
48B	T1BG	2	1	1/286th
48C	T1B	2	0	1/286th
48D	T1BG	2	1	1/286th
48E	R2BG	2	2	1/286th
49A	R2BG	2	2	1/286th
49B	T1BG	2	1	1/286th
49C	T1B	2	0	1/286th
49D	T1BG	2	1	1/286th
49E	R2BG	2	2	1/286th
50A	R2BG	2	2	1/286th
50B	T1BG	2	1	1/286th
50C	T1B	2	0	1/286th
50D	T1BG	2	1	1/286th
50E	R2BG	2	2	1/286th
51A	R2BG	2	2	1/286th
51B	T1BG	2	1	1/286th
51C	T1B	2	0	1/286th
51D	T1BG	2	1	1/286th
51E	R2BG	2	2	1/286th
52A	R2BG	2	2	1/286th
52B	T1BG	2	1	1/286th
52C	T1B	2	0	1/286th
52D	T1BG	2	1	1/286th
52E	R2BG	2	2	1/286th
53A	T1B	2	0	1/286th
53B	T1B	2	0	1/286th
53C	T1B	2	0	1/286th
53D	T1B	2	0	1/286th
53E	T1B	2	0	1/286th
53F	T1B	2	0	1/286th
53G	T1B	2	0	1/286th
54A	T1B	2	0	1/286th
54B	T1B	2	0	1/286th
54C	T1B	2	0	1/286th
54D	T1B	2	0	1/286th
54E	T1B	2	0	1/286th
54F	T1B	2	0	1/286th
54G	T1B	2	0	1/286th

EXHIBIT E
THIRTEENTH AMENDMENT
DECLARATION OF CONDOMINIUM
GENDER PARK CONDOMINIUM

II. UNITS ADDED HEREBY:

<u>Unit Designation</u>	<u>Unit Type</u>	<u>Bedrooms</u>	<u>Garage Spaces</u>	<u>Undivided Interest</u>
55A	T1B	2	0	1/286th
55B	T1B	2	0	1/286th
55C	T1B	2	0	1/286th
55D	T1B	2	0	1/286th
55E	T1B	2	0	1/286th
55F	T1B	2	0	1/286th
55G	T1B	2	0	1/286th
56A	R2BG	2	2	1/286th
56B	T1BG	2	1	1/286th
56C	T1B	2	0	1/286th
56D	T1BG	2	1	1/286th
56E	R2BG	2	2	1/286th
57A	R2BG	2	2	1/286th
57B	T1BG	2	1	1/286th
57C	T1B	2	0	1/286th
57D	T1BG	2	1	1/286th
57E	R2BG	2	2	1/286th
			Total	<u>286/286ths</u> <u>or 100%</u>

NOTES:

- (1) Unit with closet on first floor in lieu of half-bath
- (2) Unit with larger master bedroom in lieu of master bath
- (3) Unit containing approximately 798 gross interior square feet.

CONDOAMEND/GENDERPARK12/4/9/01